










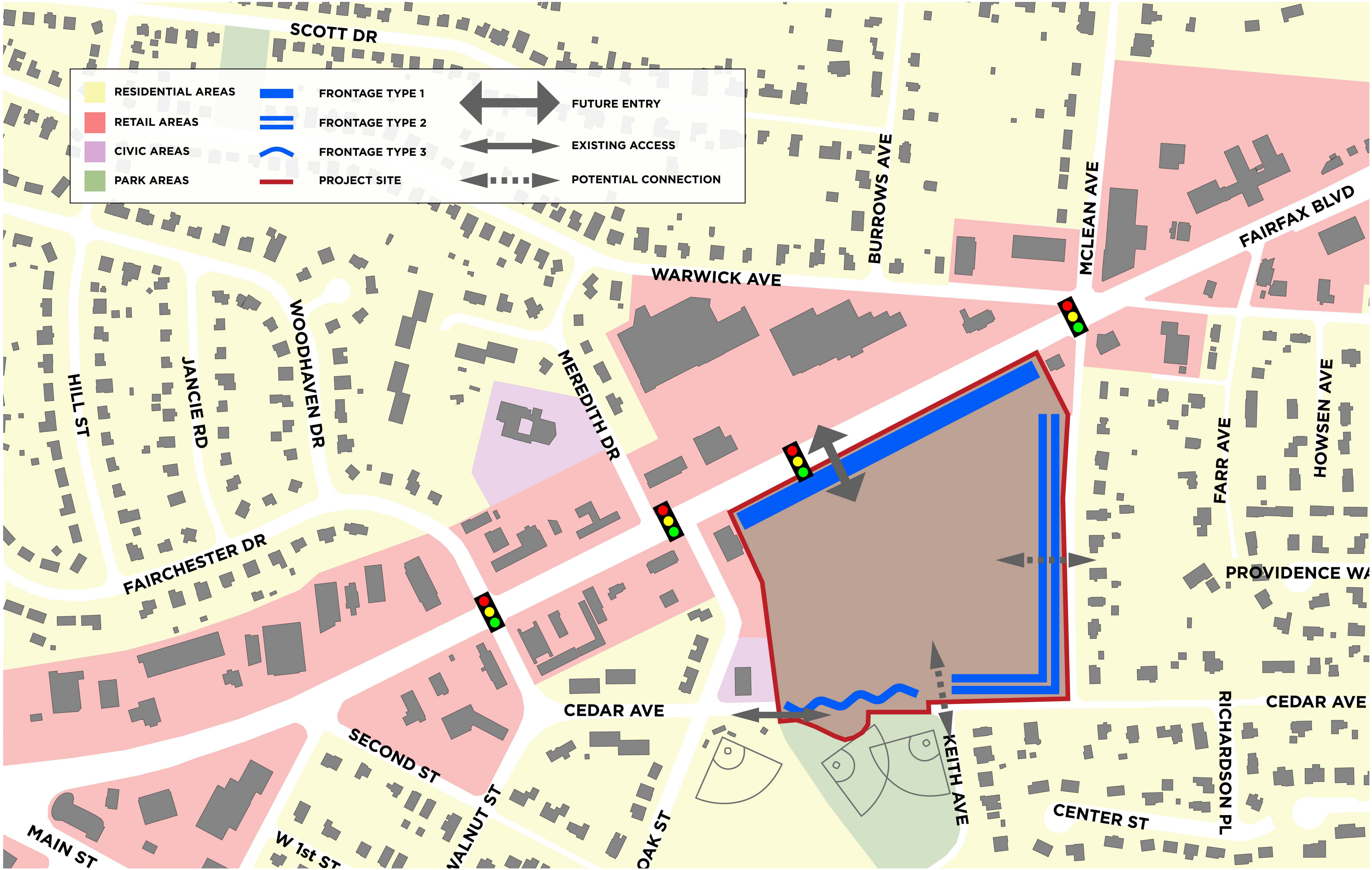


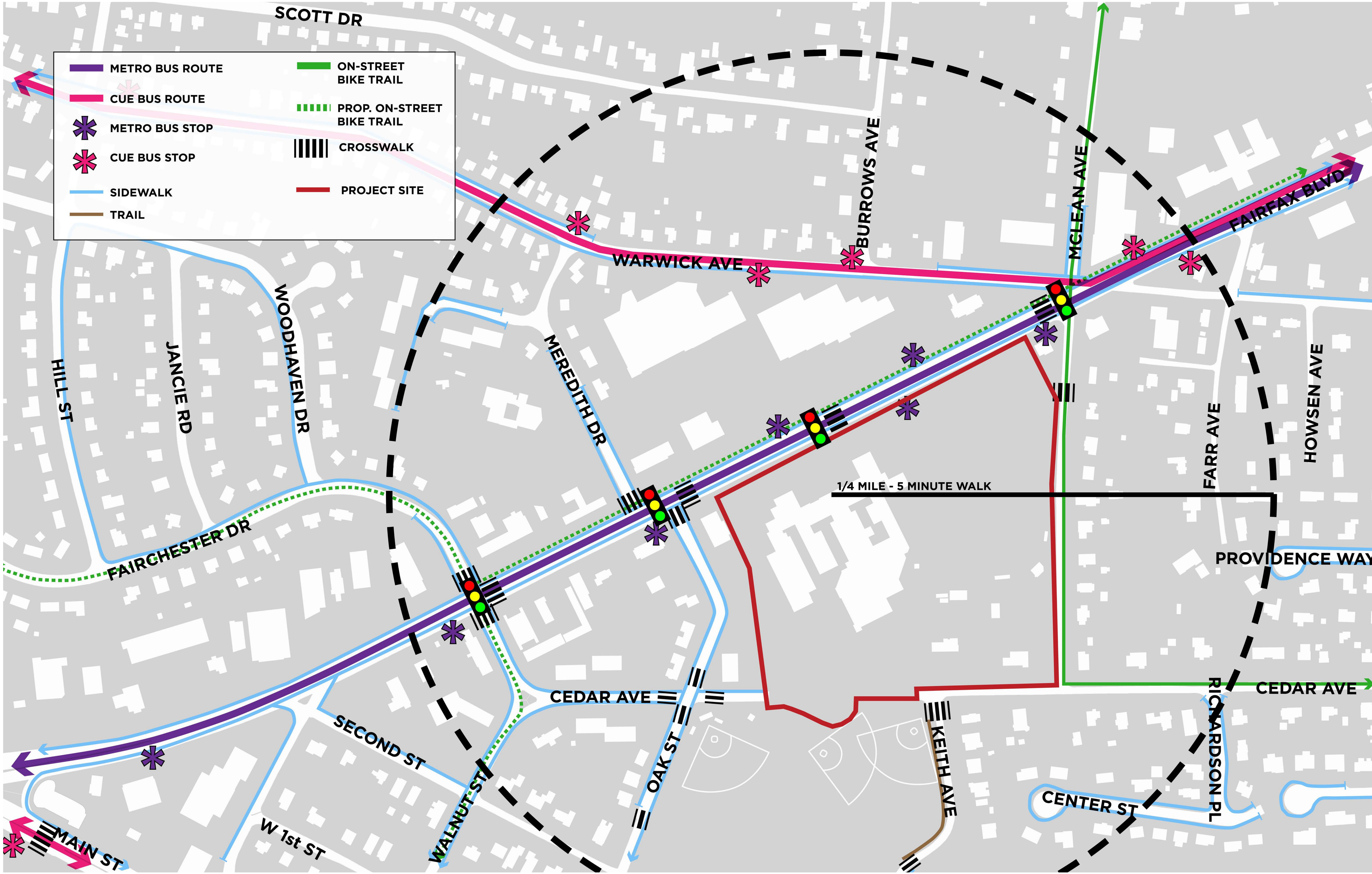
SITE AERIAL
Paul VI Development | Fairfax, Virginia



	FLOODPLAIN		PROJECT SITE
	RESOURCE PROTECTION AREA		OUTFALL
	PARKS		DRAINAGE FLOW
	STREAMS		DECIDUOUS TREE
	DRAINAGE DIVIDE		EVERGREEN TREE
	5' CONTOUR		







Pre-Development

Pre-1607 Dogue Tribe of the Algonquin language group are associated with the region.	1650 Patawomeck & Rappahannock Tribes are pushed to the region by European settlement.	1714 George Mason II patents 1,390 ac. on Accotink and Difficult Run.	ca. 1760 Edward Washington owns land.	1819 John Simpson purchases land from admin. of Washington's will; repurchases it to clear a dispute.	1853 Thomas & Anne Love purchase 211 ac. on Tussica Creek and Accotink Creek.	ca. 1861 Civil War Encampment for short period during the war.
---	---	--	--	--	--	--



Simmons-Bond Farm

1869
Nathan & Alice Bond purchase 198 ac. and build house on Chain Bridge Road.

Bond Farm

1871
Lemuel B. & wife Eliza Simmons purchase 177 ac. of daughter's land to operate a dairy farm, orchards, and build a saw mill.

Bond Subdivision

1881
Alice Bond inherits 72 ac. on the southern half of farm.
The Bonds sell a ROW to the Washington, Arlington & Falls Church Electric Railway and plat a subdivision with new roads east of the railway, and build the Cedar Ave. Depot.

Keith Subdivision

1905-1911
James W. Ballard & Thomas R. Keith purchase 45 acres from Alice Bond. Thomas & Edith Keith acquire Ballard's interest and subdivide 45 acres.

Daniell Property

1911-1917
Robert & Laura Love Daniell purchase 12 ac. from Keiths, including present-day baseball diamond, build house at 10606 Cedar Ave. and maintain small orchard at 10600 Cedar Ave.

Fairgrounds

1913
Fairfax County Fair Association purchases 17.85 ac., including school building lot, from the Keiths. The fair builds a racetrack, barns, and exhibit halls on Tussica Creek.

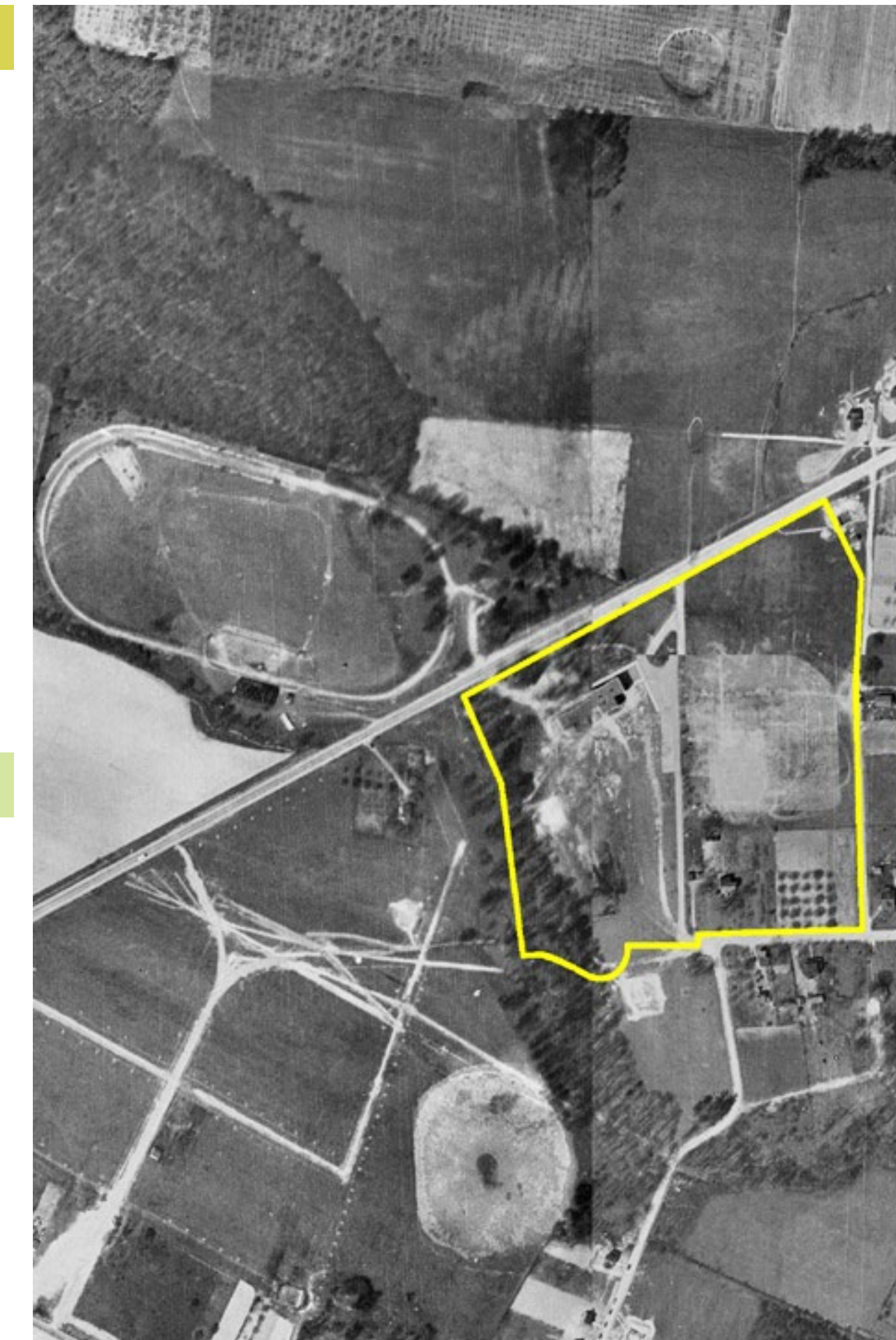
Wiley Subdivision

1917
Robert Wiley purchases 10.75 acres from Laura Daniell and divides it into two parcels, creating 10600 Cedar Ave. lot.

Farr-Sherwood Subdivision

1923-1926
Wilson & Edith Farr combine smaller pieces of the Wiley's two parcels into 5.27 ac., then subdivide into 5 lots, partnering with Albert & Annie Sherwood.

1929-1931
Fairgrounds are considered for location of Fairfax Airport. Fair Association sell ROW for Lee Hwy bypass, requiring relocation of a stable and paving over large well.



Ellis Farm

1881
John C. & Lydia Ellis purchase 103 acres on the northern half of the Bond-Simmons Farm to operate farm.

Myers Farm

1905
Ellis sells a ROW to electric railway.

Myers Farm

1909
B.F.A. & Ella Myers purchase 103 acres from Ellis' heirs, Addie Martin and Lizzie Slayton, to operate dairy farm.

Rust Subdivision

1922-1935
John W. Rust purchases 103 acres from Myers and slowly subdivides farm.

Rust Subdivision

1931
Sells ROW for Lee Hwy bypass, which served as interstate from NY to CA.



School Property

1934
Fairfax County Public School Board (FCPS) purchases 13.856 ac. from Fair Association and builds first consolidated High School with WPA funds.

1935
Fairfax High School opens in February and purchases 0.65 acres of former Ellis-Myers Farm from Rust for additions and athletic field on Lee Hwy.

1936
FCPS purchases 5.27 ac. of Farr-Sherwood Subdivision on west side of Cedar Ave. for baseball diamond.

1937
Wood frame Annex built and nicknamed the Chicken Coop.

1938-1939
Auditorium and gymnasium designed by Raymond V. Long, state architect. Constructed with WPA funds. Auditorium dedicated in February for use by the school and public.

1942
Shop and gym dressing rooms added.

1948
Flanking front wings added.

1954
Senior Wing added. Ticket booth constructed, and Memorial Field in honor of those who served in World War II dedicated.

1958-1959
Additions designed by Dixon & Norman Architects.

1960
Major renovation of historic parts. FCPS officially opposes any new commercial rezoning and erects fence between school and McDonald's "food stand".

1972-1982
George Mason College Foundation purchases school. It serves as the College's North Campus and home to George Mason College basketball games.

1982-Present
The Catholic Diocese of Arlington purchases school for Paul VI Catholic High School. Completes major renovations and additions in 2003.



- SIMMONS-BOND FARM SUBDIVISION (1869-1905)
- ELLIS-MYERS FARM SUBDIVISION (1881-1935)
- KEITH SUBDIVISION (1905-1911)
- DANIELL PROPERTY (1911-1917)
- FAIRGROUNDS (1913-1934)
- WILEY SUBDIVISION (1905-1911)
- FAR-SHERWOOD SUBDIVISION (1911-1917)
- - - PROPERTY BOUNDARY
- 2003 YEAR CONSTRUCTED

